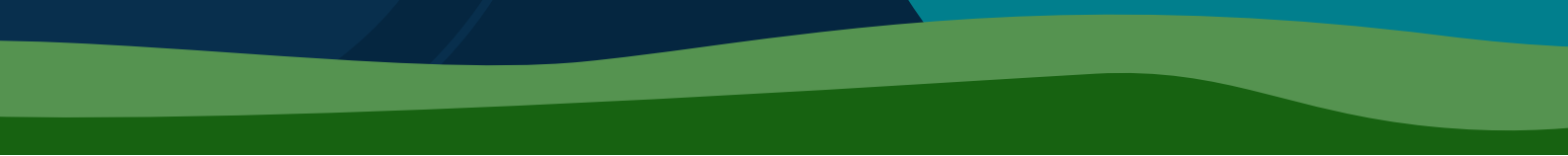
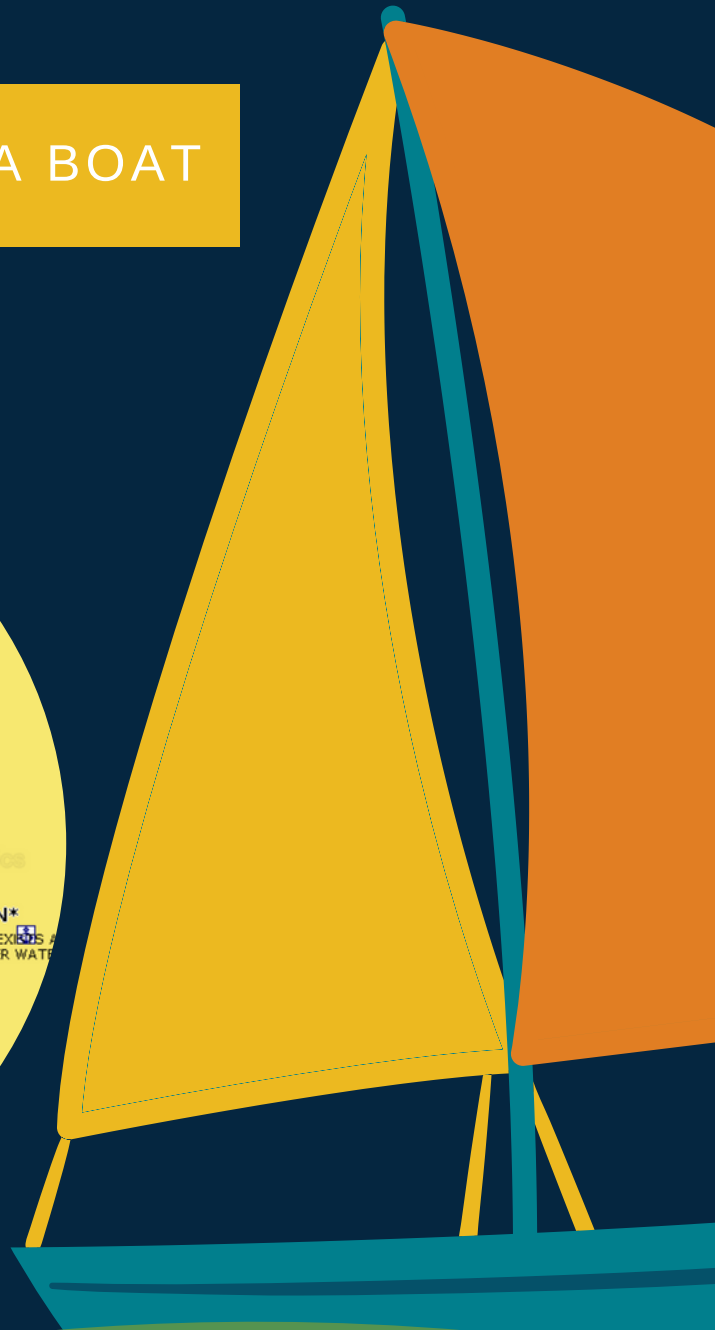
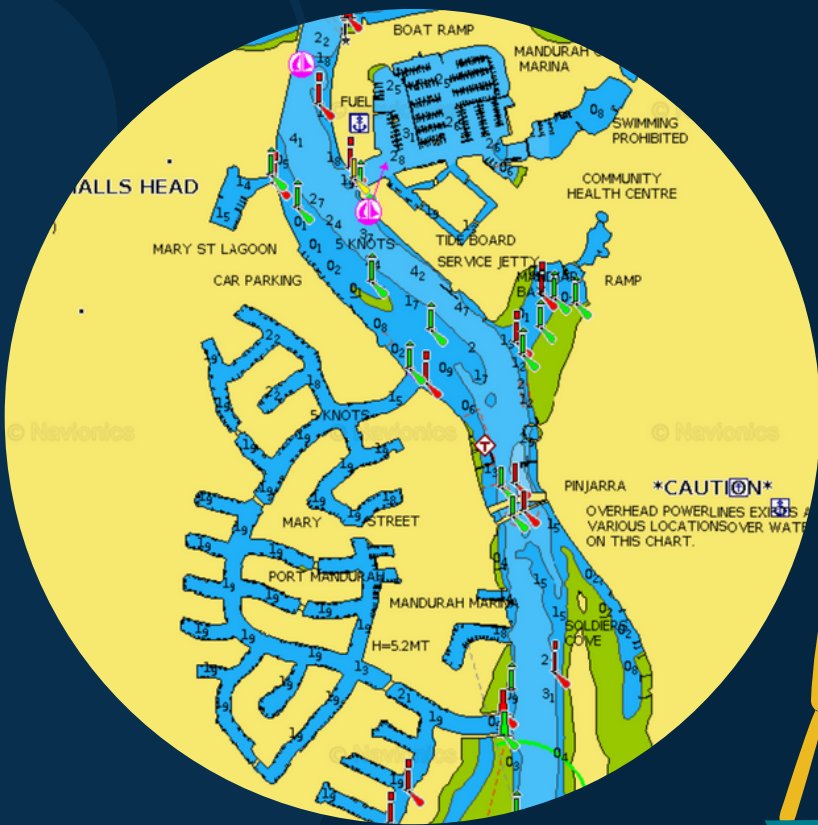


# SAFETY BOOK



ENJOY MANDURAH VIA BOAT



# ABOUT THE AREA

Know where you're going at all times.



## MANDJAR BAY

The channel in and out of Mandjar Bay, leading to our office is very shallow. You must ensure to find the nav marks when coming back.



# ABOUT THE AREA



**RECOMMENDED  
ROUTE 1.5HRS**





# ABOUT THE AREA

Know where you're going at all times.



## SOUTH ENTRANCE

The southern entrance to the canals has a deceptively shallow area. Please ensure you go out into the middle of the channel before turning.



# ABOUT THE VESSEL

---



## STARTING THE BOAT

1. Binnacle in the neutral position
2. Safety lanyard is attached
3. Twist and hold key (like a car)

# ABOUT THE VESSEL

---



## USING THE CONTROLS

1. Pushing the binnacle forward is stiff at first until it drops into “gear”
2. This is pushing the boat forward at the slowest possible speed and is suitable for leaving and returning to a jetty.
3. Pushing the throttle further forward will increase the speed. You do not need to hold in position once at the desired speed.
4. Returning to neutral is a great way to reduce speed and slow down. This will often reduce 50% of the vessels speed.
5. If you need to stop quicker the same concept applies in reverse.

**Please be sure to try the above before leaving the jetty**

# SAFETY EQUIPMENT

---



## EMERGENCY EQUIPMENT

1. Ensure Mobile Phone is switched on LOUD
2. Life buoy location
3. Life jacket location
4. Anchor location
5. Safety Card location and emergency number.
6. Ladder, First aid and fire extinguisher locations

**EMERGENCY NUMBER**  
**0488 017 494**

# WARNINGS

---



## FINES APPLY

1. No sitting with arms and feet outside the vessel.
2. No climbing on the roof. They are not weight-bearing and will break!
3. No smoking.
4. No speeding and no wake and wash.
5. No erratic driving, please stay to the right and go in a straightline where possible
6. Your phone must be on at all times

**Failure to comply will lead to the hire being terminated and no refund will be given.**



# WARNINGS

---



## SPEEDING

1. Maximum speed is 5 knots in the canals and this side of the first bridge.
2. You also need to be aware of the wake and wash of the vessel, sometimes doing the correct speed is not enough.

### Too Much Wake



**Failure to comply will lead to the hire being terminated and no refund will be given.**

# FAQS

---

## Can we go up the river?

Yes however this requires more competence and should be carefully assessed. It is not allowed for first time boaters. You'll also need to be sure to remember:

- Install the Deckee app or something to help with navigation.
- Reminder that coming back against prevailing winds and tide will mean a maximum speed of 4-5kts and takes approximately 2hrs from the Ravenswood.
- The short ropes make it hard to tie up and you may need to use the anchor or borrow some additional lines from us. \$10 per line.

## Where can we go for lunch?

It's possible to moor up at a number of restaurants including Sharky's in the marina and Boundary Island Brewery. The ropes on the vessel are short so it can be tricky however they can use the anchor rope if required. It's best to discourage this unless they have a hire for 4+ hours as waiting for food is a common reason for a late return. It's also expensive paying for the boat to be sat a jetty etc.

## Can we use a BBQ?

If you're on a basic pontoon you're welcome to BYO a BBQ, all other vessels it's not allowed. If they want to get off and BBQ there are public BBQ's available at Keith Holmes Reserve in the Marina.

# FAQS

---

## **Where can we see dolphins?**

The best places to see dolphins are around the entrance to the marina and the rocks as you enter the canals near the Anzac memorial. However dolphins can be seen anywhere, including at out jetty.

## **Where to go fishing or crabbing?**

Crabs can be caught anywhere but a good place is along the edge of the channel just past the southern entrance to the canals. The water is shallow here and they're out the way of boat traffic. If they're fishing we normally recommend a similar location or Boundary Island if they the appropriate competency and confidence to venture that far.

## **Can we go swimming from the boat?**

Yes swimming is allowed from the vessel however you should ensure you pick a suitable location and have the appropriate fitness to get back onto the vessel. Especially vessels that still have rope ladders it can be quite difficult. The best location is Chardonnay Bay, quite close in, so that it's shallow enough to standup.

# THANK YOU



## Address

20A Ormsby Terrace, Mandurah

## Telephone

08 9535 5877

## Website

[www.mandurahboathire.com.au](http://www.mandurahboathire.com.au)

