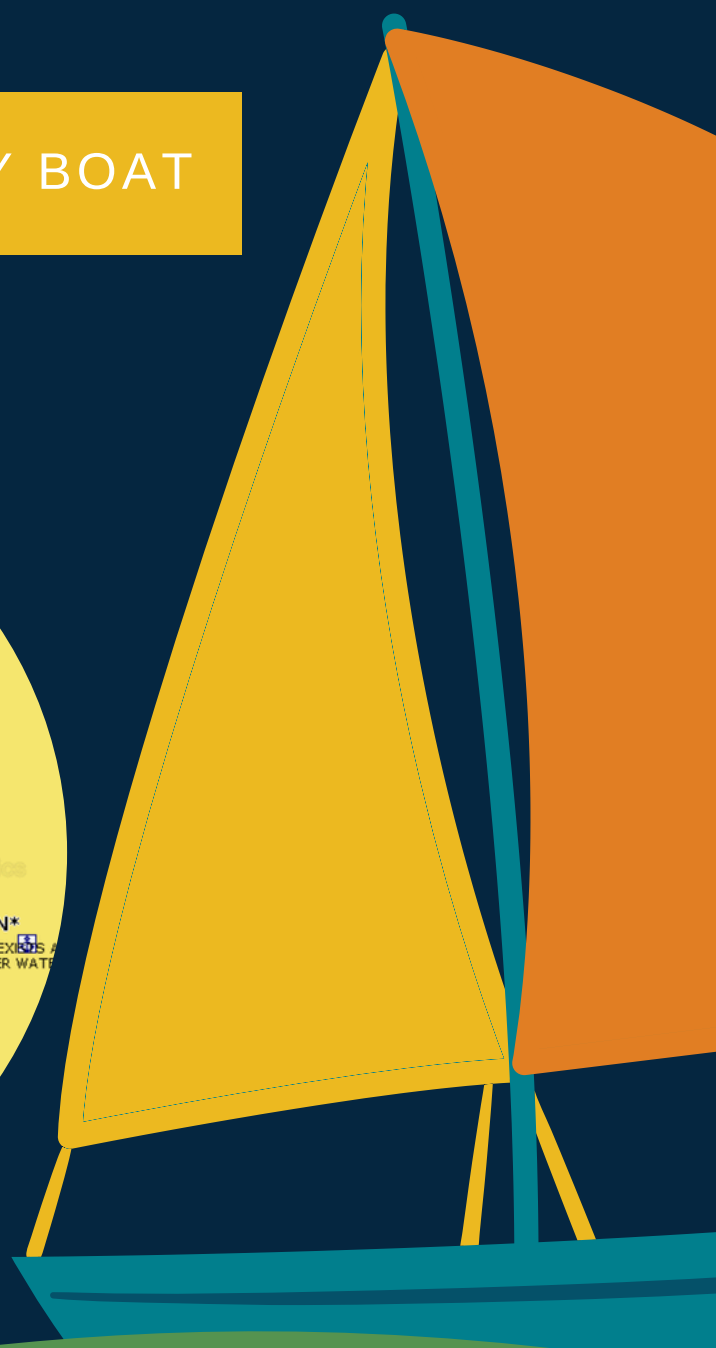
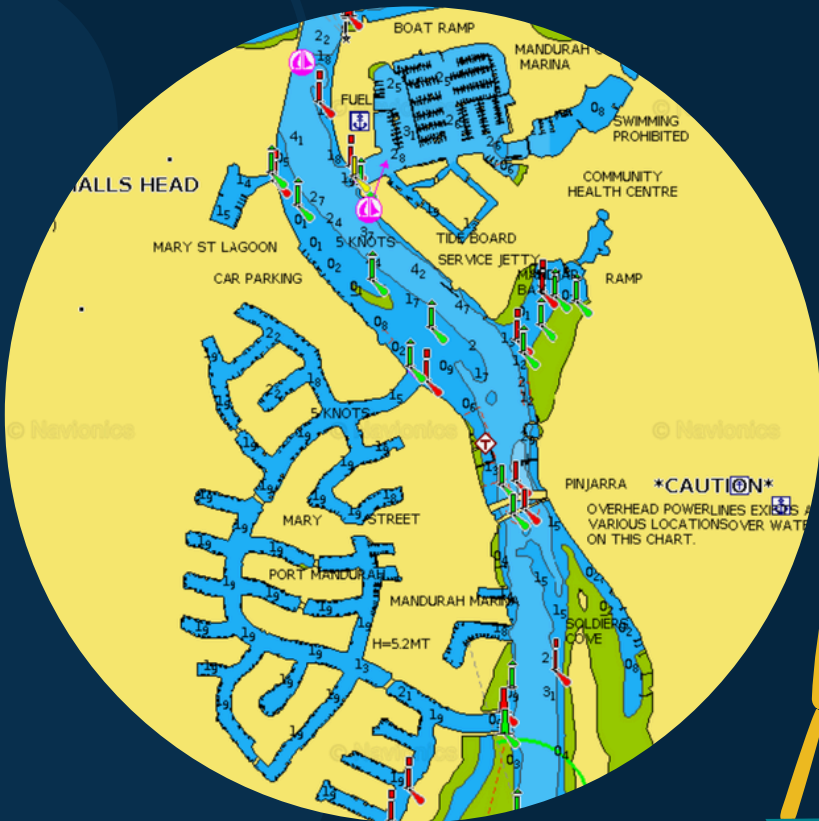


SAFETY BOOK



ENJOY MANDURAH BY BOAT



BOATING RULES



THE BASICS

1. Always drive on the right-hand side when in a channel.
Oncoming vessels will pass to your left.
2. Be on the lookout for the green and red markers at all times.
If in doubt, stay away from rocks and the shoreline.
3. Maximum of 5 knots in all built up areas. No wake and wash in the canals.
4. Keep all limbs inside of the vessel while travelling. Do not let children sit with their legs over the front or sides.
5. If in doubt, drop the anchor and call us on the Emergency Number provided.

**If in doubt please ask our staff before
departure**

ABOUT THE AREA



**RECOMMENDED
ROUTE 1.5HRS**



ABOUT THE AREA

Know where you're going at all times.



MANDJAR BAY

The channel in and out of Mandjar Bay, leading to our office is very shallow. You must ensure to remain between the red and green navigation markers.



ABOUT THE AREA

Know where you're going at all times.



SOUTH ENTRANCE

The southern entrance to the canals has an extremely shallow area. Please ensure you go out into the middle of the channel before turning, keeping between the red and green markers.



ABOUT THE AREA

Know where you're going at all times.



STINGRAY POINT

A common area for groundings is Stingray Point, with boats 'cutting the corner'. It is very shallow and rocky here. By keeping all the red markers on your left, you will avoid the shallows.



ABOUT THE AREA

Is there anywhere we are not permitted to go?



OCEAN & VENETIAN CANALS



Our vessels are not equipped for the Ocean, nor are hirers permitted to enter the Ocean as per the hire & drive agreement.



The canals opposite the Marina have deceptively low bridges, which pose a risk of damaging the roof or canopy.

ABOUT THE VESSEL



STARTING THE BOAT

1. Throttle in the neutral position
2. Black toggle clipped firmly behind kill switch (as below)



3. Twist key twice, the first will turn on battery, the second will start the engine (like a car)

ABOUT THE VESSEL



USING THE CONTROLS

1. Pushing the binnacle (throttle) forward is stiff at first until it drops into 'gear'. All boats except pontoons have a trigger which must be lifted / depressed (a marine clutch).
2. This is pushing the boat forward at the slowest possible speed and is suitable for leaving and returning to a jetty.
3. Pushing the throttle further forward will increase the speed. Do this gradually, gentle acceleration is key. You do not need to hold in position once at the desired speed.
4. Returning to neutral is a great way to reduce speed and slow down. This will often reduce 50% of the vessels speed.
5. If you need to stop quicker the same concept applies in reverse.

Please be sure to try the above before leaving the jetty

SAFETY EQUIPMENT



EMERGENCY EQUIPMENT

1. Ensure Mobile Phone is switched on LOUD
2. Life buoy location
3. Life jacket location
4. Anchor location
5. Safety Card location and emergency number
6. Ladder, first aid and fire extinguisher locations

EMERGENCY NUMBER
0488 017 494

WARNINGS



FINES APPLY

1. No sitting with arms, legs or feet outside the vessel
2. No climbing on the roof. They are not weight-bearing and will break!
3. No smoking or vaping
4. No speeding and no wake or wash (excessive water displacement)
5. No erratic driving, please stay to the right and go in a straight line where possible
6. Respect canal residents and other boaters
7. Your phone must be on and contactable at all times
8. Zero tolerance for intoxication for the skipper
9. Maintain 100 meters from dolphins, if they approach, slow right down

Failure to comply will lead to the hire being terminated and no refund will be given.

WARNINGS



SPEEDING

1. Maximum speed is 5 knots in the canals and the office side of the first bridge.
2. You also need to be aware of the wake and wash of the vessel, sometimes doing the correct speed is not enough.

Too much water displacement (wake / wash) from vessel



Failure to comply will lead to the hire being terminated and no refund will be given.

FAQS



Can we head into the Murray river?

Yes however this requires more competence and experience. It is not permitted for first time boaters. You'll also need to be sure to remember:

- Install the Deckee app or similar to help with navigation.
- You will be coming back against prevailing winds and tide will mean a maximum speed of 4-5kts and takes approximately 2hrs from the Ravenswood Hotel.
- The short ropes make it hard to tie up and you may need to use the anchor or borrow some from us with a deposit of \$10 per rope.



Where can we go for lunch?

It's possible to moor up at a number of restaurants including Sharky's in the marina and Boundary Island Brewery. The ropes on the vessel are short so it can be tricky however you can use the anchor rope if required.

We recommend a minimum of four hours hire time so that you are not feeling rushed and have time to take in the sights and not spend the bulk of your hire with the boat moored up at a jetty.



Can we use a BBQ?

BBQ's are not permitted for safety reasons. If you wish to BBQ there are public BBQ's available on the foreshore and at Keith Holmes Reserve in the Marina. BYO snacks are welcome on our vessels.

FAQS

Where can we see dolphins?

Common dolphin sightings occur at the entrance to both the marina and the canals, however being wild animals there is no guarantee of dolphin sightings, and they can occur anywhere within our inland waters.

It is important to remain 100meters from the dolphins and slow the vessel right down.

Where to go fishing or crabbing?

Crabs can be caught anywhere but a good place is along the edge of the channel just past the southern entrance to the canals. This way you are in shallower water and avoiding boat traffic. If you are fishing, we suggest a similar location, or if you have prior experience in boating, venturing to Boundary Island, but it is worth considering this can be a challenge if you are a first time boater.

Can we go swimming from the boat?

Yes swimming is allowed from the vessel however you should ensure you pick a suitable location and have the appropriate fitness to get back onto the vessel. Especially vessels that still have rope ladders it can be quite difficult. The best location is Chardonnay Bay, quite close in, so that it's shallow enough to standup.

A vessel under anchor should NEVER be left unattended.

THANK YOU



Address

20A Ormsby Terrace, Mandurah

Website

www.mandurahboathire.com.au

Telephone

08 9535 5877

